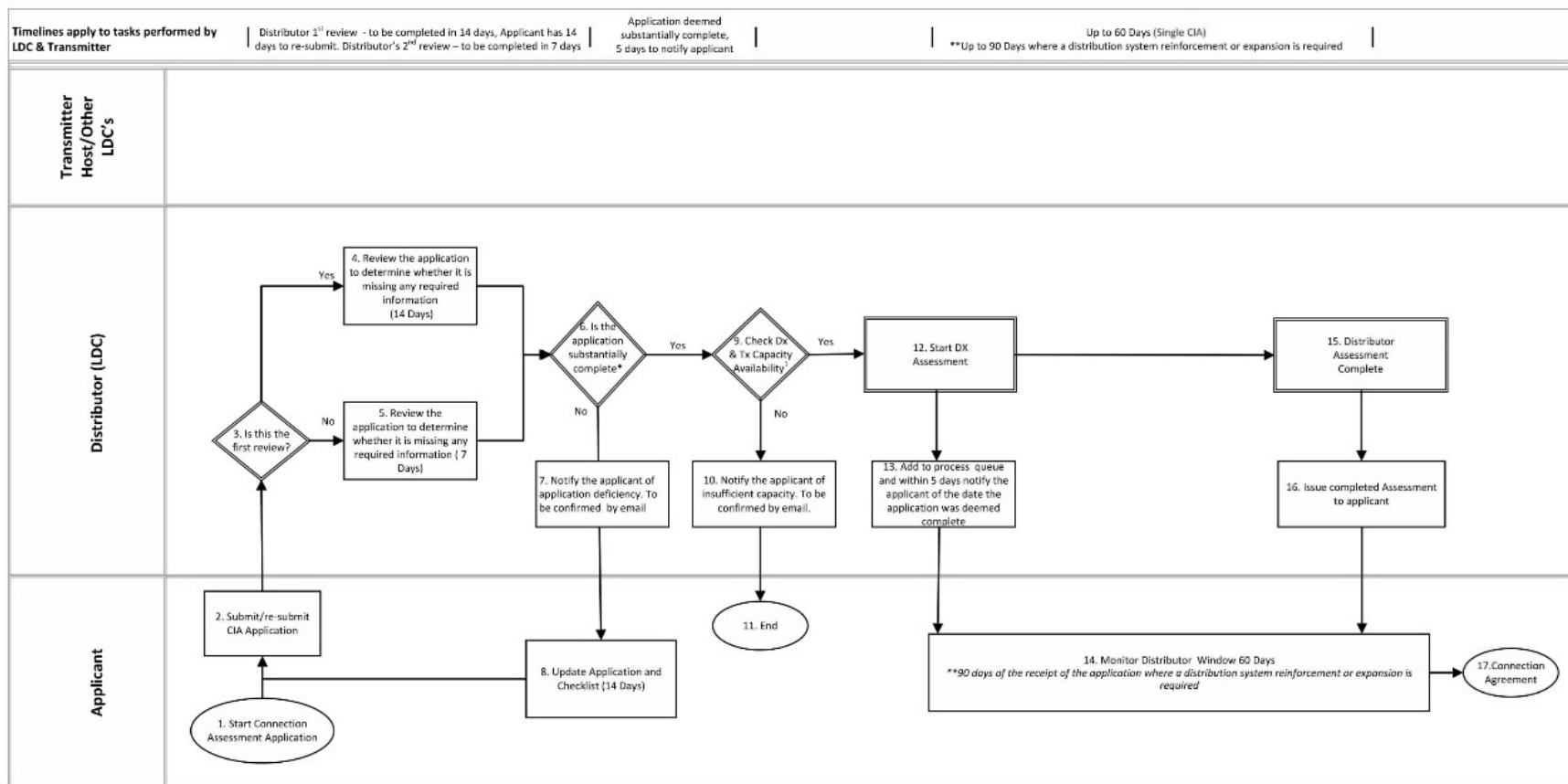


Connection Impact Assessment Process for Small Embedded Generation Facility



*An application for connection assessment is substantially complete when it contains information sufficient to allow a distributor to carry out its connection assessment activities

1. Check DX & TX Capacity gate is a secondary check to address system changes between the Pre-consultation phase and the CIA application.

Step 1. The applicant initiates the CIA process and gathers the current CIA application form and distributor's application requirements from the distributor.

Step 2. The applicant submits the completed CIA Application package, including completed application form, payment for required studies, attachments, and application checklist.

Step 3. The distributor determines if this is the initial submission or a revised application submission.

Step 4. For initial submissions, the distributor reviews the application for completeness within 14 calendar days.

Step 5. For revised application submissions, the distributor reviews the application for completeness within 7 calendar days.

Step 6. For the completeness check outlined in steps 4 and 5 above, the distributor will review the application to determine if there is sufficient information provided by the applicant to process the submission. Once the distributor determines that the submission provides the necessary information to commence a CIA study, the application is deemed substantially completed.

Step 7. For submissions that are not substantially complete, the distributor will notify the applicant of the application deficiencies via email or letter if the applicant's email is not provided. The deficiency notification shall identify any errors and omissions in the application that would prevent the distributor from proceeding with the CIA. The notification shall outline the available remedies required to have the application deemed substantially complete.

Step 8. On receipt of a deficiency notification, the applicant should review and revise the application to address the deficiencies and resubmit the application. The process allows 14 days for the applicant to resubmit a revised application. If the applicant does not return the revised application within 14 days, the distributor may remove the application from the processing queue. If the application is removed from the queue, it may be treated as a new application once it is resubmitted.

Step 9. For submissions that are deemed substantially complete, the distributor will reconfirm⁵ transmission and distribution capacity availability.

Step 10. The distributor will notify the DER applicant via email if there is no capacity available to support the connection.

Step 11. If there is no capacity available, the process concludes. .

Step 12. If capacity is confirmed to be available, the distributor proceeds with the assessment

⁵ This is a secondary check to address the possibility of system changes between the Preliminary Consultation phase and the CIA application.

Step 13. The distributor will add applications to the processing queue in the order in which they are deemed substantially complete and within 5 days will notify the DER applicant of the date the application was deemed substantially complete.

Step 14. The date the submission is deemed substantially complete starts the 60-day or 90-day window set out in Step 16, below.

Step 15. The distributor completes the CIA

Step 16. The distributor will provide with its CIA assessment a detailed cost estimate of the proposed connection and an offer to connect within:

- i. 60 days of the receipt of the substantially complete application where no distribution system reinforcement or expansion is required; or
- ii. 90 days of the receipt of the substantially complete application where a distribution system reinforcement or expansion is required

Step 17 The process moves onto the connection agreement phase.
